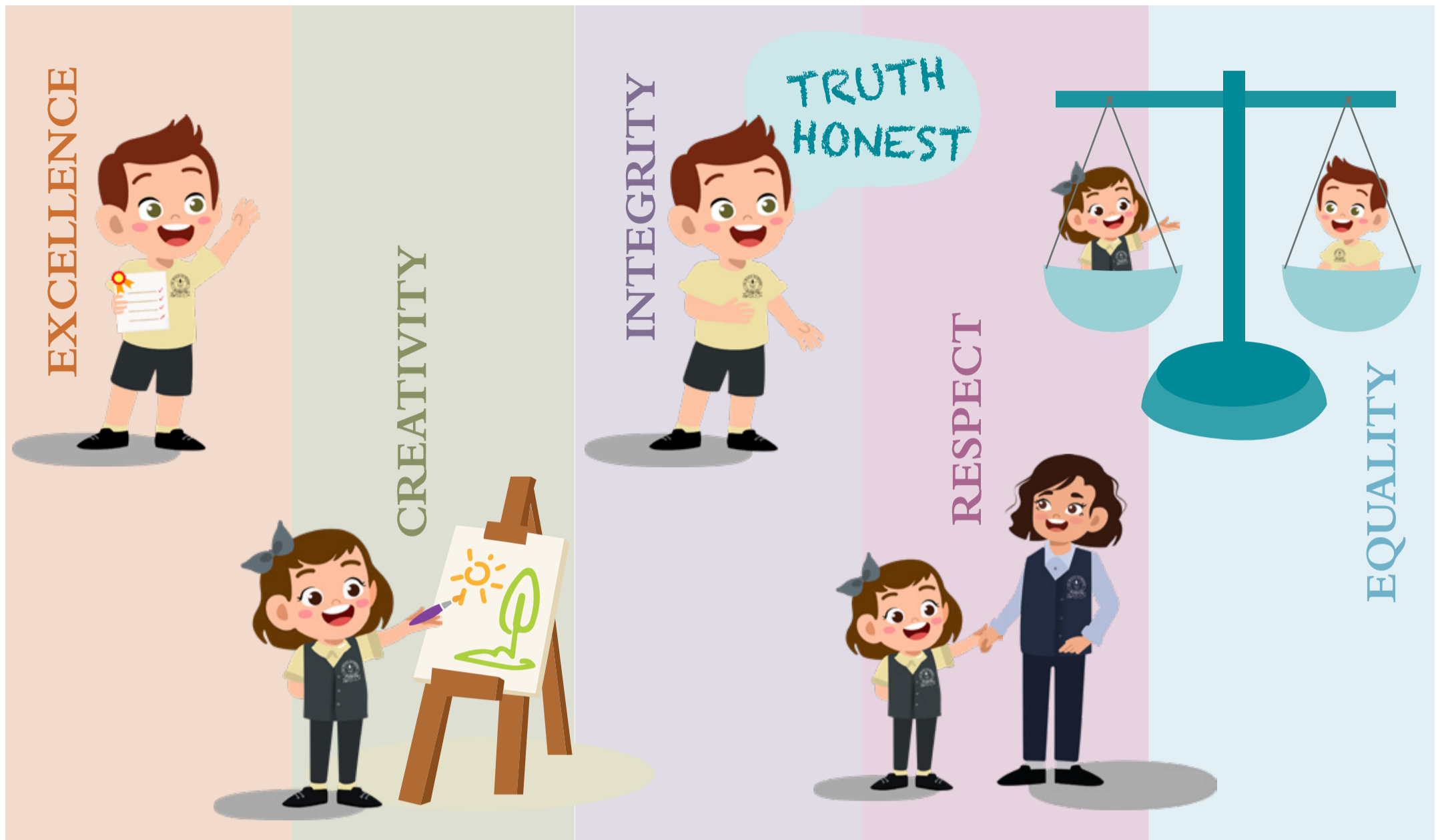


ARS CORE VALUES - KG - GR5



EXPECTATIONS

Follow instructions immediately

Raise your hand; wait for your turn & take permission before leaving your seat

Focus on the task given by the teacher

Complete the task to the best of your ability

Arrive at school on time & well prepared

Share ideas openly

Express, show and display your talents and gifts

Be patient when working with others

Don't shame, mock, or belittle other's efforts

Make good choices when problem solving

Always tell the truth

Use kind words and display good manners

Adhere to the school dress code

Be honest in all activities relating to school work

Take responsibility for your actions

Be respectful when speaking and listening to teachers and peers

Respect your property and that of the school and others

Work quietly and use your indoor voices

Walk in all indoor spaces - no running

Respect the personal space of others by keeping your hands and feet to yourself

Use kind and encouraging words with others

Include everyone in your work and play

Give others the opportunity to speak and share ideas

No bullying or cyber bullying

Accept everyone's similarities and differences

Immediate Referral To Supervisor

Bad language & gestures

Fighting

Destroying property

Bullying

Possession of offensive or dangerous items

Plagiarism

Disrespecting a teacher or TA

Referral To Supervisor After Three Repeated Offences

Tardiness/ out of class without permission

Interrupting the lesson

Disrespecting your friends

Disruptive behavior

Not following instructions

Others